



ATPBD3 Polyclonal Antibody

Catalog No	YP-Ab-00679
Isotype	IgG
Reactivity	Human;Rat;Mouse;
Applications	WB;ELISA
Gene Name	CTU1
Protein Name	Cytoplasmic tRNA 2-thiolation protein 1
Immunogen	The antiserum was produced against synthesized peptide derived from human ATPBD3. AA range:291-340
Specificity	ATPBD3 Polyclonal Antibody detects endogenous levels of ATPBD3 protein.
Formulation	Liquid in PBS containing 50% glycerol, 0.5% BSA and 0.02% sodium azide.
Source	Polyclonal, Rabbit,IgG
Purification	The antibody was affinity-purified from rabbit antiserum by affinity-chromatography using epitope-specific immunogen.
Dilution	Western Blot: 1/500 - 1/2000. ELISA: 1/20000. Not yet tested in other applications.
Concentration	1 mg/ml
Purity	≥90%
Storage Stability	-20°C/1 year
Synonyms	CTU1; ATPBD3; NCS6; Cytoplasmic tRNA 2-thiolation protein 1; ATP-binding domain-containing protein 3; Cancer-associated gene protein; Cytoplasmic tRNA adenylyltransferase 1
Observed Band	36kD
Cell Pathway	Cytoplasm.
Tissue Specificity	Brain,Epithelium,Teratocarcinoma,
Function	function:Plays a central role in 2-thiolation of mcm(5)S(2)U at tRNA wobble positions of tRNA(Lys), tRNA(Glu) and tRNA(Gln). Directly binds tRNAs and probably acts by catalyzing adenylation of tRNAs, an intermediate required for 2-thiolation. It is unclear whether it acts as a sulfurtransferase that transfers sulfur from thiocarboxylated URM1 onto the uridine of tRNAs at wobble position.,pathway:tRNA modification; 5-methoxycarbonylmethyl-2-thiouridine-tRNA biosynthesis.,similarity:Belongs to the ttcA family. CTU1/NCS6/ATPBD3 subfamily.,subunit:Component of a complex at least composed of URM1, CTU2/NCS2 and ATPBD3/NCS6. May for a heterodimer with CTU2/NCS2.,
Background	function:Plays a central role in 2-thiolation of mcm(5)S(2)U at tRNA wobble positions of tRNA(Lys), tRNA(Glu) and tRNA(Gln). Directly binds tRNAs and



probably acts by catalyzing adenylation of tRNAs, an intermediate required for 2-thiolation. It is unclear whether it acts as a sulfurtransferase that transfers sulfur from thiocarboxylated URM1 onto the uridine of tRNAs at wobble position.,pathway:tRNA modification; 5-methoxycarbonylmethyl-2-thiouridine-tRNA biosynthesis.,similarity:Belongs to the ttcA family. CTU1/NCS6/ATPBD3 subfamily.,subunit:Component of a complex at least composed of URM1, CTU2/NCS2 and ATPBD3/NCS6. May for a heterodimer with CTU2/NCS2.,

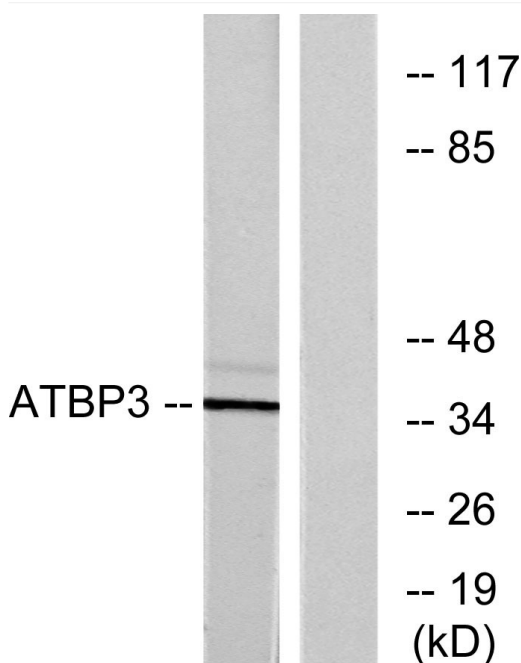
matters needing attention

Avoid repeated freezing and thawing!

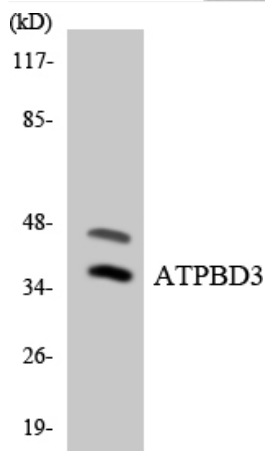
Usage suggestions

This product can be used in immunological reaction related experiments. For more information, please consult technical personnel.

Products Images



Western blot analysis of lysates from LOVO cells, using ATPBD3 Antibody. The lane on the right is blocked with the synthesized peptide.



Western blot analysis of the lysates from 293 cells using ATPBD3 antibody.